

# i-spraywash

---

The cleaning method that sticks around



faster



cleaner



greener



safer



better

Cleaner surfaces with  
**80% lower** impact  
on the **environment**



## i-spraywash

Keeping a decent cleaning standard in bigger areas such as showers, restrooms and kitchens is a struggle. Operators don't have enough time and existing methods are either expensive, difficult to master or heavy to work with. i-spraywash is the only tablet-based cleaning system in the world. The i-spraywash system is a plug & play gun with an integrated dosing feature. It has a special nozzle that creates an active foam that really sticks to the surface. All you need is a water hose and the right i-spraywash tab and you are ready to go! The operator doesn't have to think about how the system works, only where to spray.

### Features

Designed for fast cleaning of large surfaces.

Ideal for any operator light and handy

Improving ergonomics

Clean 2-300 m<sup>2</sup> with just one tab

Safe time and money

**Real clean** also means **real green**



### Faster

Cleaning 1m<sup>2</sup> in just one second you save you up to 50% working time. Less is more. Faster foam coverage and less foam on the floor will save you time when rinsing.



### Cleaner

The special foam nozzle and tablets create an effective active foam that sticks to surfaces and even those hard to reach corners.



### Greener

The i-spraywash saves up to 25% of chemicals and 50% of water compared to traditional foam cleaners. All i-spraywash tablets are biodegradable and eco-friendly and developed with only the best active components, good for both the worker and the environment.



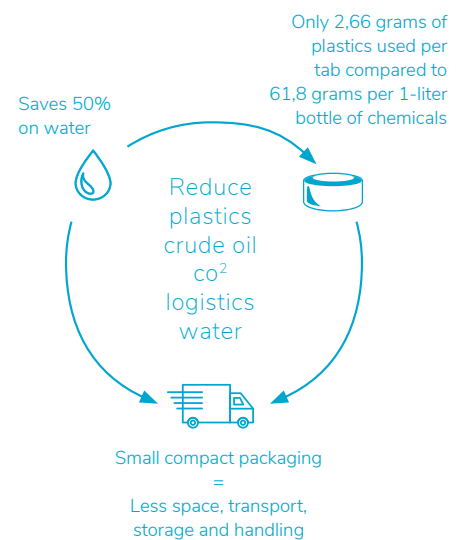
### Safer

The i-spraywash is 2-3 times lighter than most liquid cleaning systems, saving weight on wrist, arm, shoulder and back of the operator. The concentrated tablets make sure you never over or under dose your chemicals. The system uses a color-coding system to organize your daily cleaning.



### ...and better for everyone!

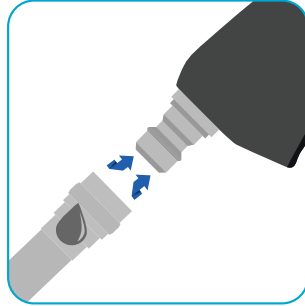
It has never been this easy, safe and effective to clean and disinfect! No more heavy lifting or transporting of liquid chemicals in concentrate or diluted form. The i-spraywash automatically dilutes and dispenses. All you have to do is to choose the right tablet for your current task.





### Choose the right tab

We offer a variety of 5 tablets for different cleaning and disinfection tasks.



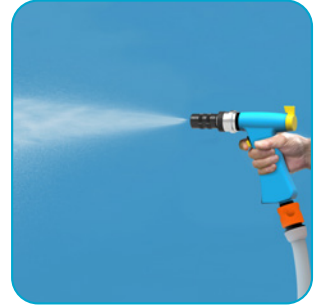
### Connect to water hose

Simply connect to a water hose with normal water pressure. Works with cold, lukewarm and warm water.



### Integrated dosing

The i-spraywash has a function to adjust the needed dosing. Just turn to adjust for the needed cleaning effect.



### 2 in 1, click-off-click-on

When you are done spraying foam, simply click-off the foam nozzle and click on the rinse nozzle and start rinsing.



### Color-coded cleaning

The i-spraywash concept includes color-coded tablet containers, tablet kits and equipment. Easy wall mounted for simple and safe storage.



### Cut down shipping costs

1 concentrated tab is equal to 1L liquid concentrate. so instead of 18 bottles of liquid concentrate, you will receive 18 tablets in a small compact carton box. This reduces the impact on the environment with at least 80%. Additionally, the i-spraywash reduces your water usage up to 50%.



### Two foam filters

The i-spraywash comes with two foam filters. The white foam filter is for fast, fine and compact foam. The black foam filter is used to create an increased foam effect and more concentrated foam, designed for floor cleaning.



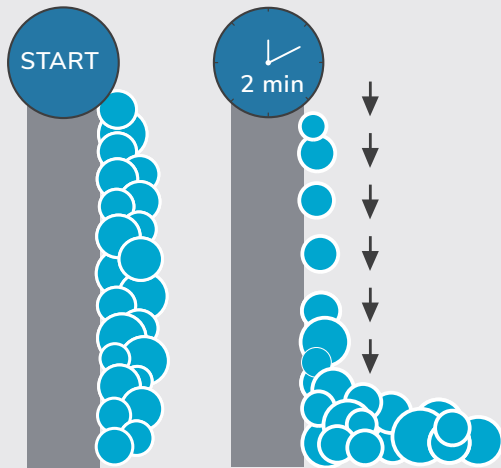
### Maximum effect

Combine the i-spraywash with the i-scrub 21B and the i-mop for an even deeper clean. Use the i-fibre range to finish the job.

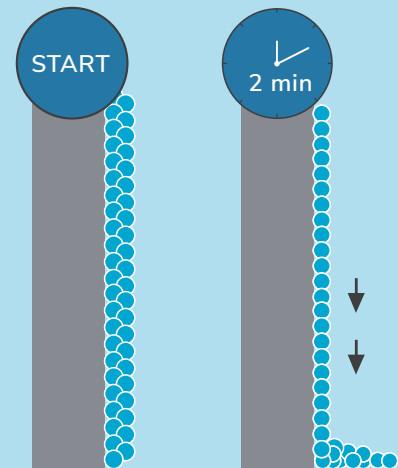
# Foam that **sticks** around

When you apply a thin layer of foam to the wall with the i-spraywash it really sticks. This means less rinsing of heavy airy foam on the floor. So less water and chemicals give you a much better cleaning result and will save you time and water when rinsing.

### Regular foam



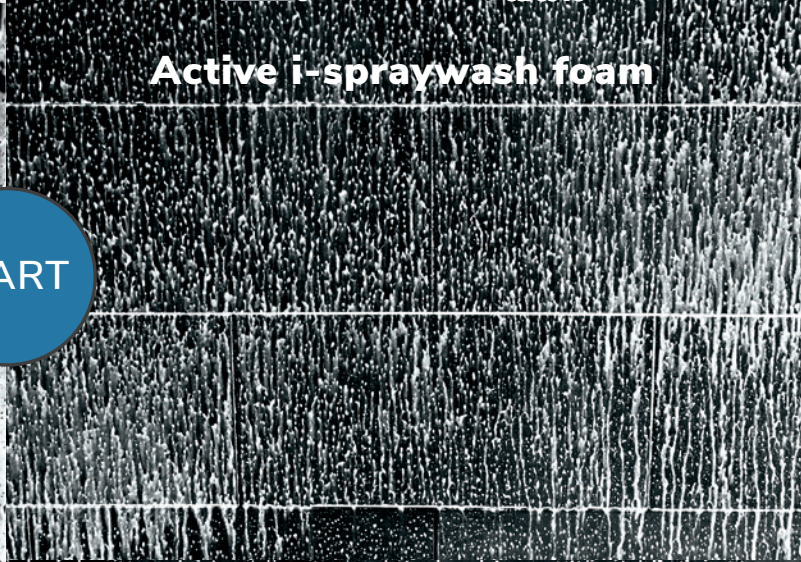
### Active i-spraywash foam



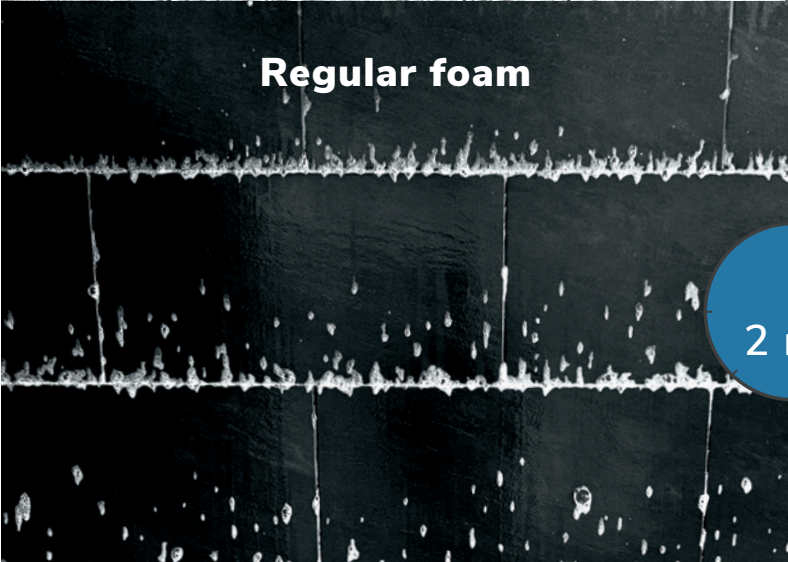
### Regular foam



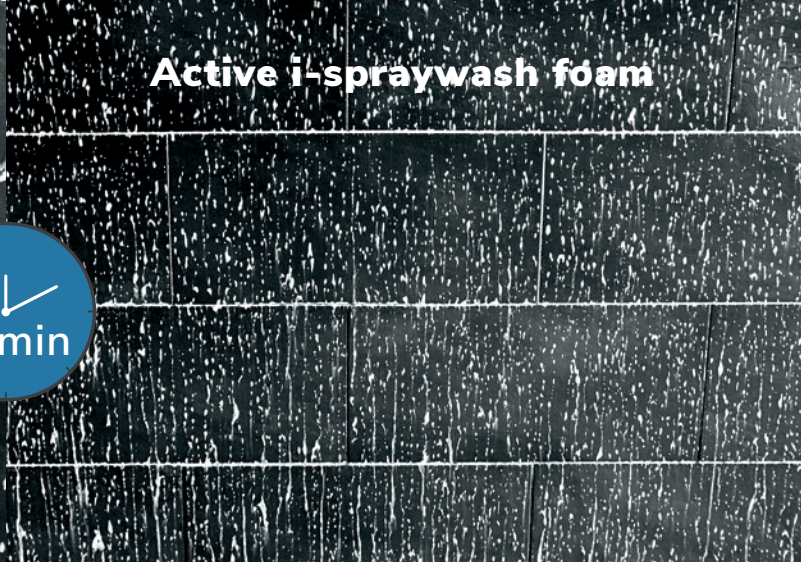
### Active i-spraywash foam



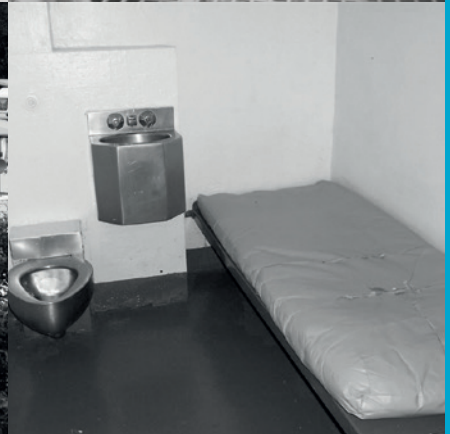
### Regular foam



### Active i-spraywash foam



# One solution **numerous** applications



# i-spraywash Tabs

The SprayWash tablets are developed and produced only for use in the i-spraywash system. We offer a variety of tablets for different cleaning and disinfection tasks.

We have cleaning tabs for descaling, daily and heavy cleaning. Our ChlorTab Extra and DesTab are among the most efficient disinfectants in the business and will increase your hygienic level.



## CleaningTab 1

For periodic descaling of all surfaces that can withstand water, including walls, floors, tables, mirrors, equipment, machinery and inventory. Effective against limescale and to prevent limescale build-up.

**pH: 1,5**



## CleaningTab 9

For daily and heavy cleaning of all surfaces that can withstand water, including walls, floors, tables, equipment, machinery and inventory. Effective against body fat, animal fat, vegetable oils, fats and dirt.

**pH: 9,5**



## CleaningTab 12

For heavy cleaning on very dirty conditions that can withstand water, including walls, floors, tables, equipment, machinery and inventory. Effective against body fat, animal fat, vegetable oils, fats and dirt.

**pH: 12**



## DesTab

Active oxygen disinfection and cleaning of all surfaces that can withstand water, including walls, floors, tables, equipment, machinery and inventory. Effective against bacteria, viruses and fungi, biofilm and as odor control.

**pH: 4,5**



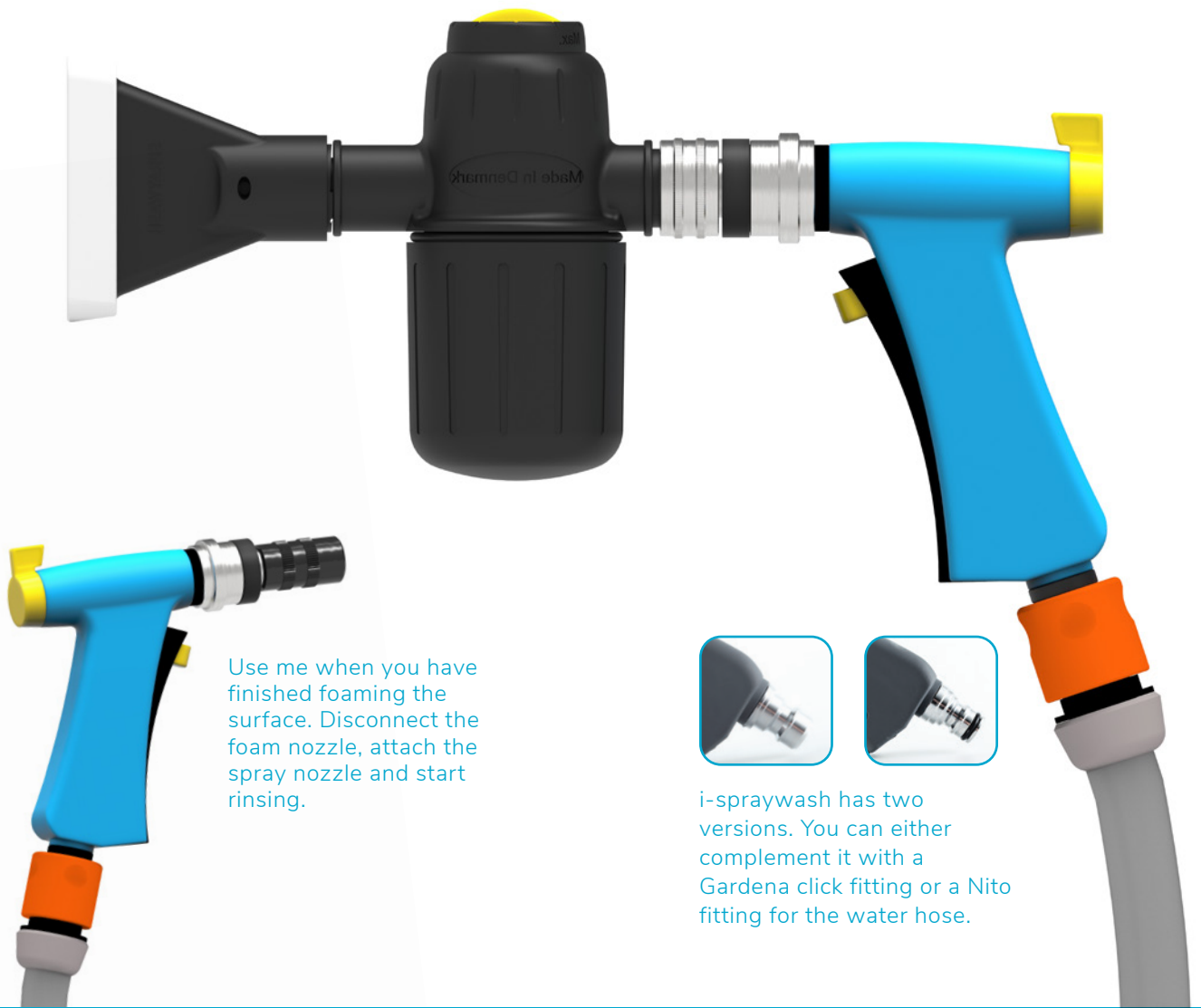
## ChlorTab Extra

Chlorine disinfection and cleaning of all surfaces that can withstand water, including walls, floors, tables, equipment, machinery and inventory. Effective against bacteria, viruses, fungi, biofilm and as odor control.

**pH: 6,0**



Each box contains  
**18 tabs**



Use me when you have finished foaming the surface. Disconnect the foam nozzle, attach the spray nozzle and start rinsing.



i-spraywash has two versions. You can either complement it with a Gardena click fitting or a Nito fitting for the water hose.

## Technical specifications



Weight with foamsprayer	0,8 kg
Size with foamsprayer	34x19cm
Weight with rinse nozzle	0,4 kg
Size with rinse nozzle	15,5x16cm
Water pressure:	2-4,5 bar
Max. using temperature:	45 °
Min. using temperature:	5 °

VI.01-20171108

[i-teamglobal.com](http://i-teamglobal.com)

i-team Global HQ

Hoppenkuil 27B • 5626DD Eindhoven • Netherlands • +31 40 266 24 50 • [hello@i-teamglobal.com](mailto:hello@i-teamglobal.com)